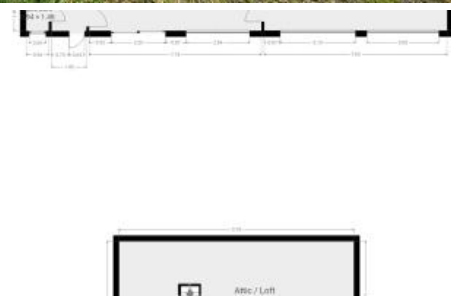


Sold



5 Grassy Rd, Norfolk Island



Commercial Shed Opportunity with Excellent Location

Don't miss this unique chance to secure a versatile property with both residential and commercial potential. Located just a stone's throw from Norfolk's town centre, this shed on Grassy Road might be the opportunity you have been waiting for!

- **Generous Portion:** Spanning 844m², this property offers ample space and flexibility for various uses.
- **Commercial Shed:** The property features a substantial 89m² commercial shed, measuring approximately 17.95m x 4.95m. Ideal for business operations or storage, the shed includes:
 - **Three Roller Doors:** Each roller door is approximately 3m wide x 2.6m high, providing easy access for vehicles and equipment.
 - **Mezzanine Floor:** An upstairs mezzanine floor adds valuable extra storage or workspace.
 - **Solid Foundation:** The shed is built on a durable cement slab.
- **Accessibility:** Convenient access from Grassy Road and a shared easement with the neighbouring property.
- **Utilities:** The property is connected to sewerage and includes a near-new 10,000-gallon water tank.
- **Location:** Centrally located, this property is very close to the town centre, offering the perfect blend of convenience and functionality.

Contact us today to arrange a viewing and explore the endless possibilities this property has to offer!

844 m2

Price SOLD for \$260,000
Property Type Commercial
Property ID 797
Land Area 844 m2
Warehouse Area 89 m2

Agent Details

Rose Evans - 0011 6723 22429

Office Details

Norfolk Island Real Estate
76 Taylors Road Norfolk Island, NSW,
2899 Australia
0011 6723 22429



Norfolk Island
Real Estate
hettie home

information is accurate and do not have any belief in one way or the other in its accuracy. We do not accept any responsibility to any person for its accuracy and do no more than pass it on. All interested parties should make and rely upon their own inquiries in order to determine whether or not this information is in fact accurate.