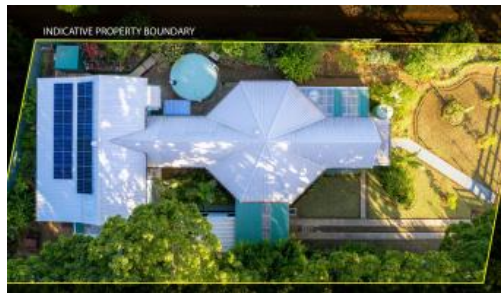




**22 Grassy Rd, Norfolk Island**



## Private Rental Property - Located close to Town

Only 1km from the Burnt Pine town centre, providing convenience and comfort.

A well-appointed and newly renovated one-bedroom unit discreetly positioned upstairs at the rear of the dwelling, offers a retreat-like ambiance with a private deck off the Master bedroom. A seamlessly connected downstairs bedroom/study, ensures both comfort and functionality. The entire house is surrounded by lush gardens and numerous covered areas, allowing space to enjoy every hour of the day.

- Sustainable living with large rainwater tanks, providing an abundant supply of approximately 12,250 gallons.
- Modern amenities include gas instant hot water system, 6.5kW solar voltaic panels, and an impressive 19.2kW battery.
- Privacy and security are assured with a fully fenced property.
- Enjoy the convenience of quality concrete parking for up to six vehicles outside the front fence, complemented by a concrete driveway and a convenient carport within the fenced area.
- Hall, foyer and second bathroom (as indicated on floor plan) are not included as part of the rental property and will be locked off
- 6month lease
- No pets

Enhanced by beautiful established gardens and fruitful trees, this property offers a great location and a tranquil environment.

 2  1  7

### Price

\$370 per week including electricity

### Property Type

Rental

### Property ID

776

### Agent Details

Michelle Dowling - 0011 6723 22429

### Office Details

Norfolk Island Real Estate  
76 Taylors Road Norfolk Island, NSW,  
2899 Australia  
0011 6723 22429



The above information provided has been furnished to us by the vendor/s. We have not verified whether or not that information is accurate and do not have any belief in one way or the other in its accuracy. We do not accept any responsibility to any person for its accuracy and do no more than pass it on. All interested parties should make and rely upon their own inquiries in order to determine whether or not this information is in fact accurate.