



16 Snell's Lane, Norfolk Island



Perfect Site Ready to Build

If you are looking for an easy to manage, relatively flat portion of land really close to town then you can't go past this newcomer! At almost half an acre (1879m²) this block is the ideal size on which to build a family home. The land is completely cleared, mowed, and fully fenced... all ready to design your home and start building.

The well-maintained portion is located on Snells Lane which is accessed via Shortridge Road. The location is in one of the most convenient areas of Norfolk Island, being just a short walk to town and school.

Contact the Norfolk Island Real Estate office for more information.

~~~~~

If you are uncertain what to build on the land, Lockwood Homes offer a range of standard and custom designed homes perfectly suited to Norfolk Island.

The PEKAPEKA HOUSE is a three-bedroom, 152m<sup>2</sup> home designed for comfortable family living or as a relaxed family holiday home. The open plan kitchen, living and dining area, two of the three bedrooms, and the snug all open out onto a large deck with built-in seating, while the third bedroom also has separate access to the outdoors.



1,879 m<sup>2</sup>

|                      |                      |
|----------------------|----------------------|
| <b>Price</b>         | SOLD for \$142,000   |
| <b>Property Type</b> | Residential          |
| <b>Property ID</b>   | 718                  |
| <b>Land Area</b>     | 1,879 m <sup>2</sup> |

### Agent Details

Rose Evans - 0011 6723 22429

### Office Details

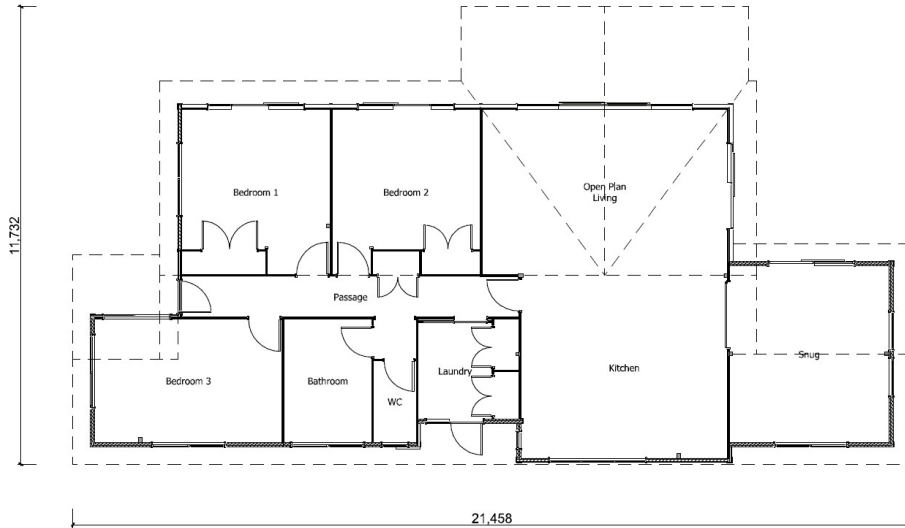
Norfolk Island Real Estate  
76 Taylors Road Norfolk Island, NSW,  
2899 Australia  
0011 6723 22429



The intersecting gable rooflines create an impressive ceiling inside the home, with connected interior beams drawing the eye to the gable end windows in both the open plan living area and snug, which may be separated by a stylish barn door.

This home is completely customisable to suit your needs and your budget with prices starting from AU\$616,400.

View more at [lockwood.co.nz](https://lockwood.co.nz) or talk to your Norfolk Island Real Estate agent for further information.



The above information provided has been furnished to us by the vendor/s. We have not verified whether or not that information is accurate and do not have any belief in one way or the other in its accuracy. We do not accept any responsibility to any person for its accuracy and do no more than pass it on. All interested parties should make and rely upon their own inquiries in order to determine whether or not this information is in fact accurate.